

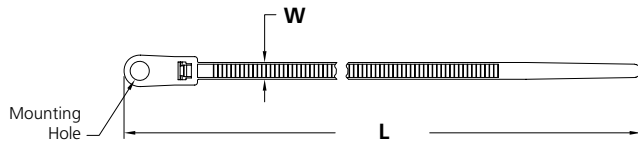
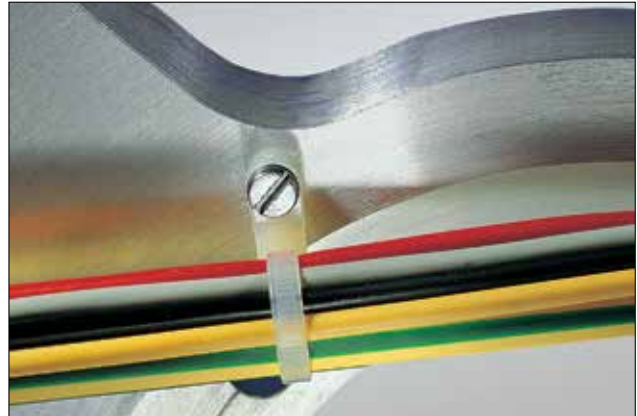
Screw Mount Cable Ties

Screw Mount Ties

One-piece Screw Mount Cable Ties fasten with a screw or bolt to provide secure routing of cable bundles. Multiple configurations are available to cover a range of bundle sizes and tensile strengths.

Features and Benefits

- Screw mount style creates low insertion and high extraction force.
- Choose from several tensile strengths and lengths to accommodate a range of applications.



PART NO.	TYPE	Mounting Screw Type	Min. Tensile Strength lbs. (N)	Length (L) in. (mm)	Max. Bundle Diameter in. (mm)	Width in. (mm)	Material	Color	Pkg. Qty.
T18MR0C2*	T18MR	#4 (M2.5)	18.0 (80.0)	4.3 (110.0)	0.8 (20.0)	0.1 (2.5)	PA66HS	Black	100
T18MR0M4*		#4 (M2.5)	18.0 (80.0)	4.3 (110.0)	0.8 (20.0)	0.1 (2.5)	PA66	Black	1000
T18MR9C2*		#4 (M2.5)	18.0 (80.0)	4.3 (110.0)	0.8 (20.0)	0.1 (2.5)	PA66	Natural	100
T18MR9M4*		#4 (M2.5)	18.0 (80.0)	4.3 (110.0)	0.8 (20.0)	0.1 (2.5)	PA66	Natural	1000
T30MR0M4*	T30MR	#8 (M4)	30.0 (135.0)	6.3 (160.0)	1.3 (32.0)	0.1 (3.5)	PA66	Black	1000
T30MR9C2*		#8 (M4)	30.0 (135.0)	6.3 (160.0)	1.3 (32.0)	0.1 (3.5)	PA66	Natural	100
T30MR9M4*		#8 (M4)	30.0 (135.0)	6.3 (160.0)	1.3 (32.0)	0.1 (3.5)	PA66	Natural	1000
T30MR0C2*		#8 (M4)	30.0 (135.0)	6.3 (160.0)	1.3 (32.0)	0.1 (3.5)	PA66	Black	100
T50MI0C2	T50MI	#10 (M5)	50.0 (225.0)	12.4 (315.0)	3.4 (85.0)	0.2 (4.7)	PA66	Black	100
T50MI9C2		#10 (M5)	50.0 (225.0)	12.4 (315.0)	3.4 (85.0)	0.2 (4.7)	PA66	Natural	100
T50MI9M4		#10 (M5)	50.0 (225.0)	12.4 (315.0)	3.4 (85.0)	0.2 (4.7)	PA66	Natural	1000

Dimensions are approximate and subject to technical changes. Use Part No. for ordering and Type for specification purposes.
 Installation tools: EVO7, EVO7SP, EVO9, EVO9HT, MK7P, MK7HT, MK9P. *This product meets UL standards. Please see appendix for specific file numbers.



Please note! Not all products listed on this page may have this approval. Please check our website for latest approvals.